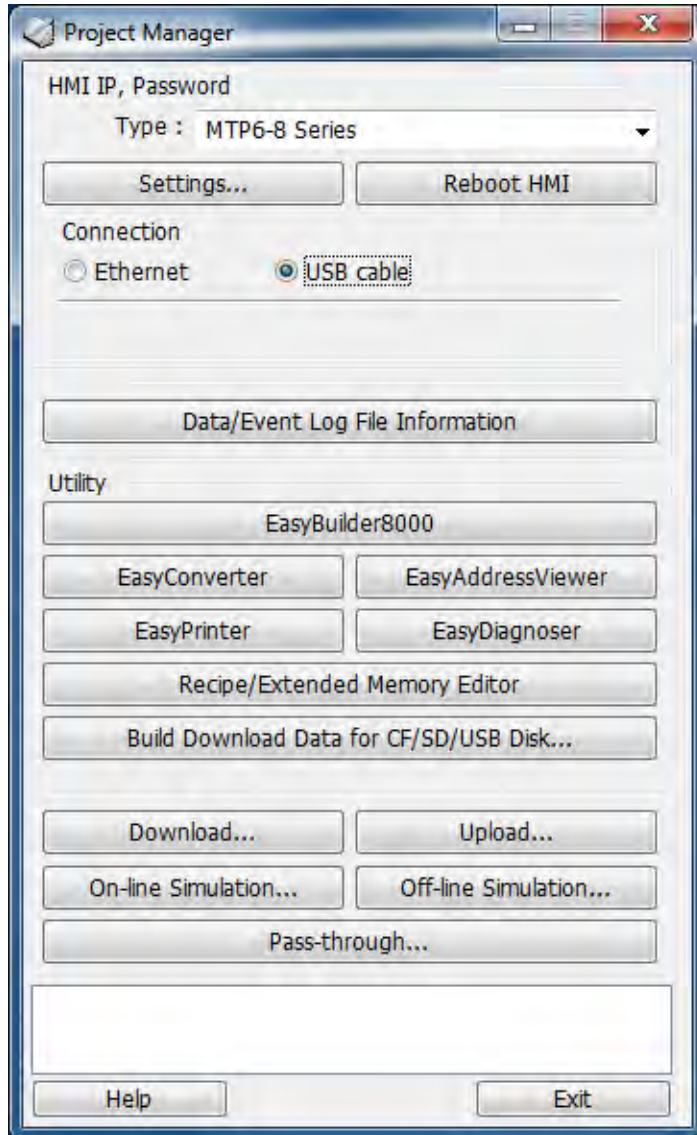




# The EB *Project Manager*

Millenium 3 and EB MTPX/XX software

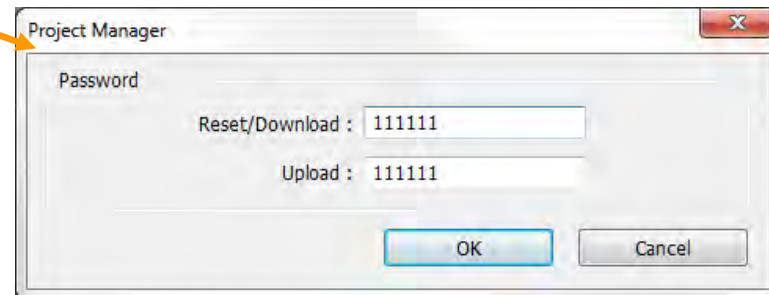
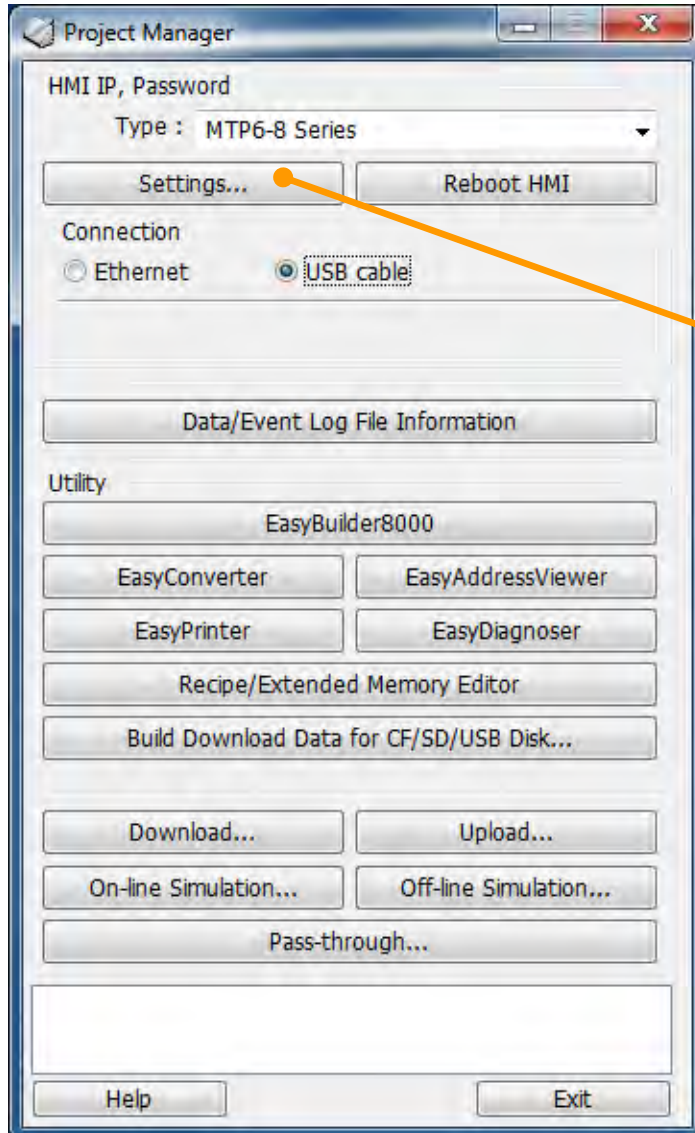


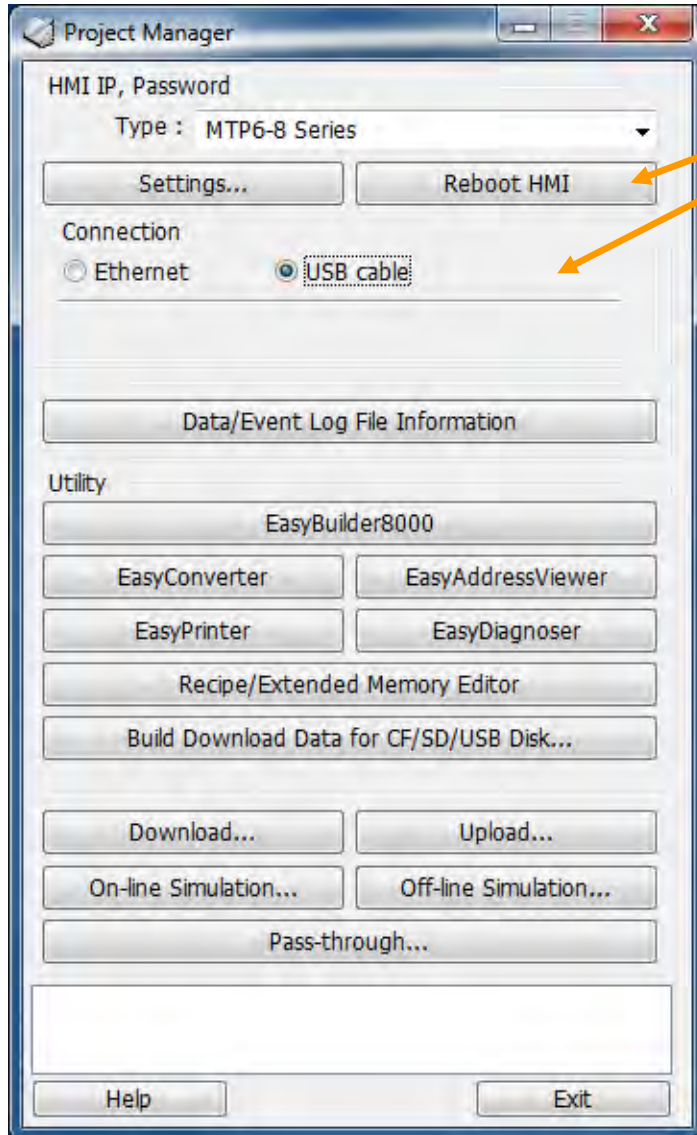
After launching the EB software the *Project Manager* is opened first.

- The *Project Manager* allows to execute some functions without opening the main software (the EB graphic editor).

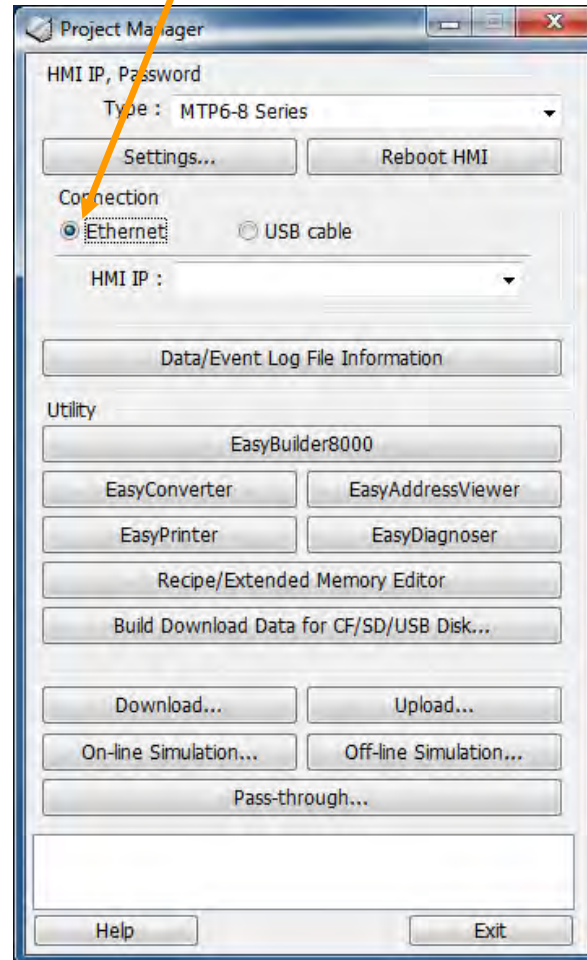
All Project Manager functions that are not explained in this document are either not available or will be described in a separate tutorial.

- In *Settings* one can enter the password that allows to access the HMI from the *Project Manager*.

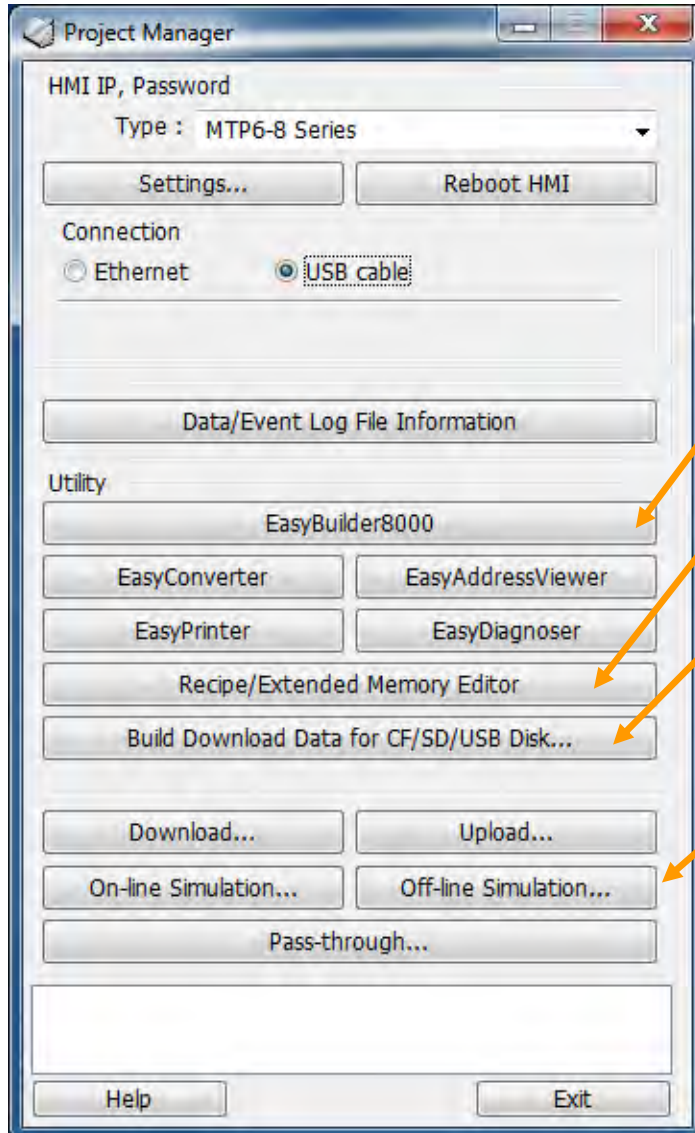




- Reboot the HMI according to the connection selected

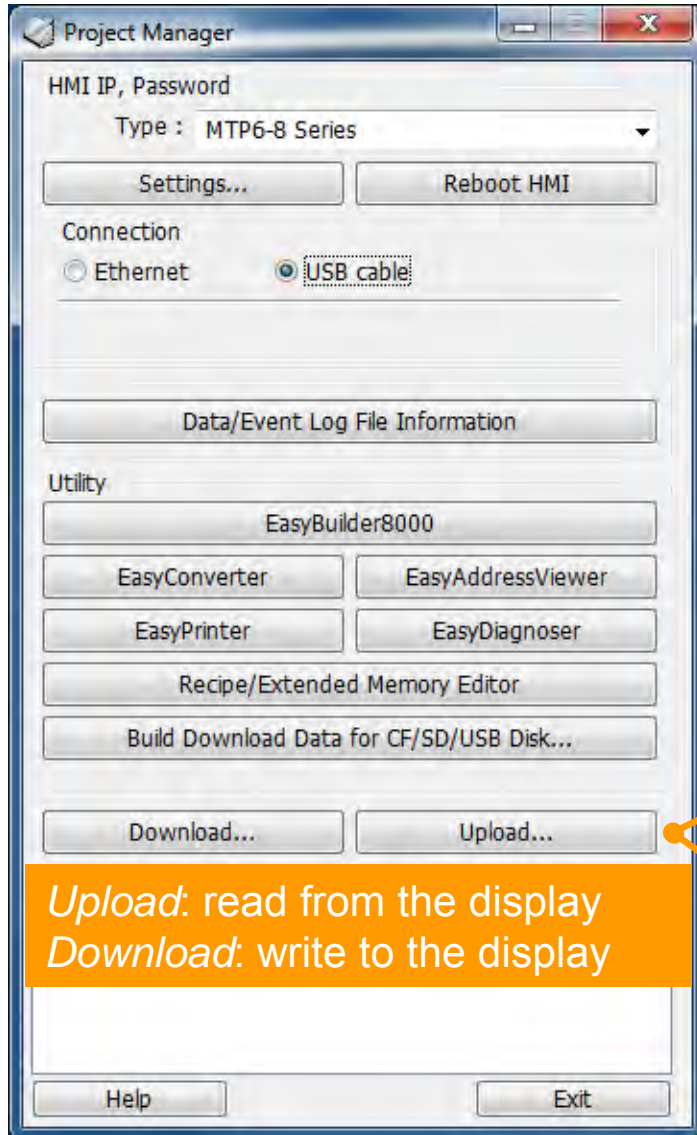




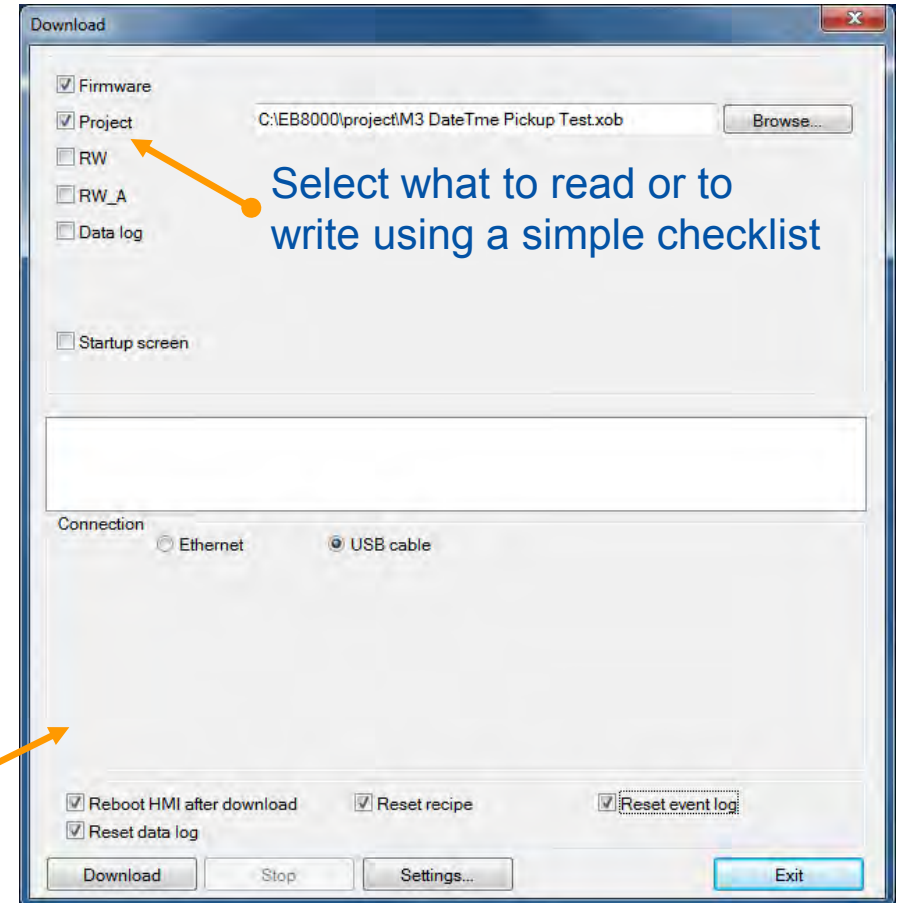


- Starts the EB graphic editor
- Starts a specific editor for .rcp and .emi files
- Builds a MT8000 directory to be used to upload the project into the HMI using the USB port
- Starts up the simulator directly with no need to open the EB software window

# Crouzet Project Manager



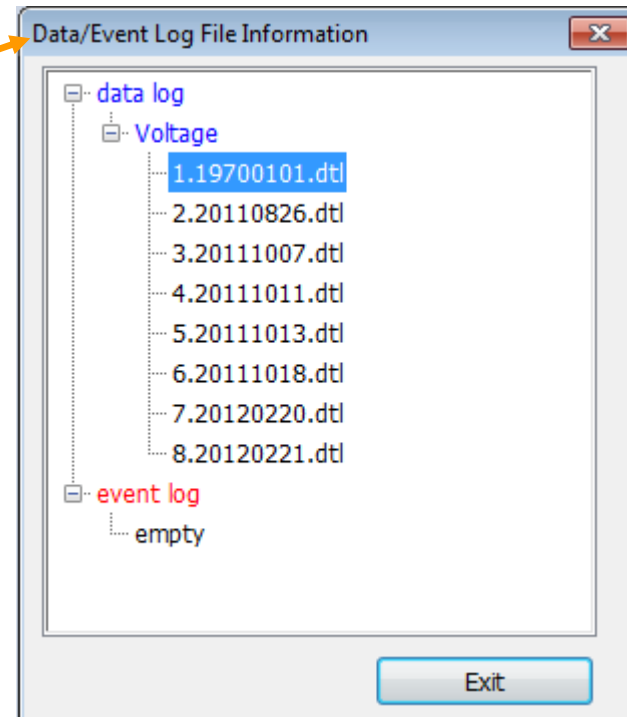
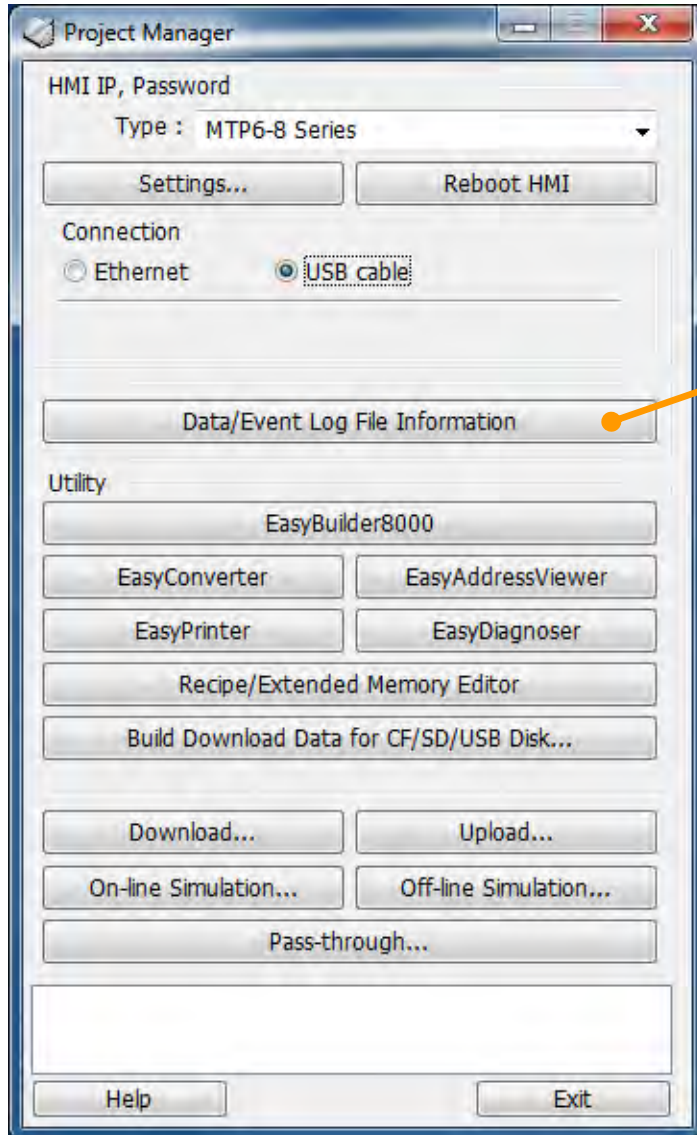
*Upload: read from the display*  
*Download: write to the display*



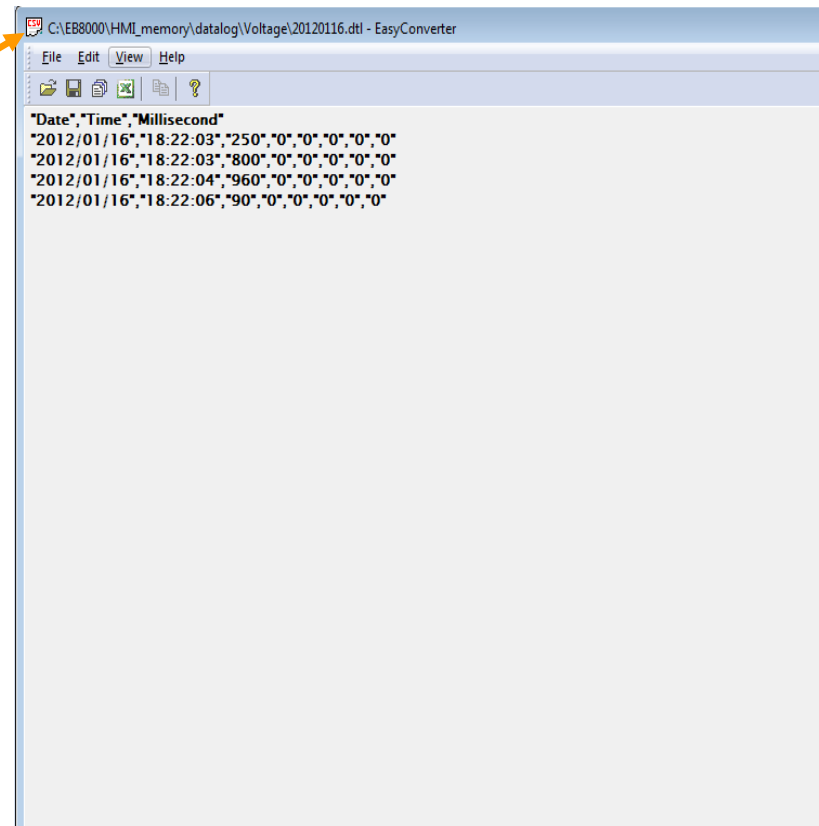
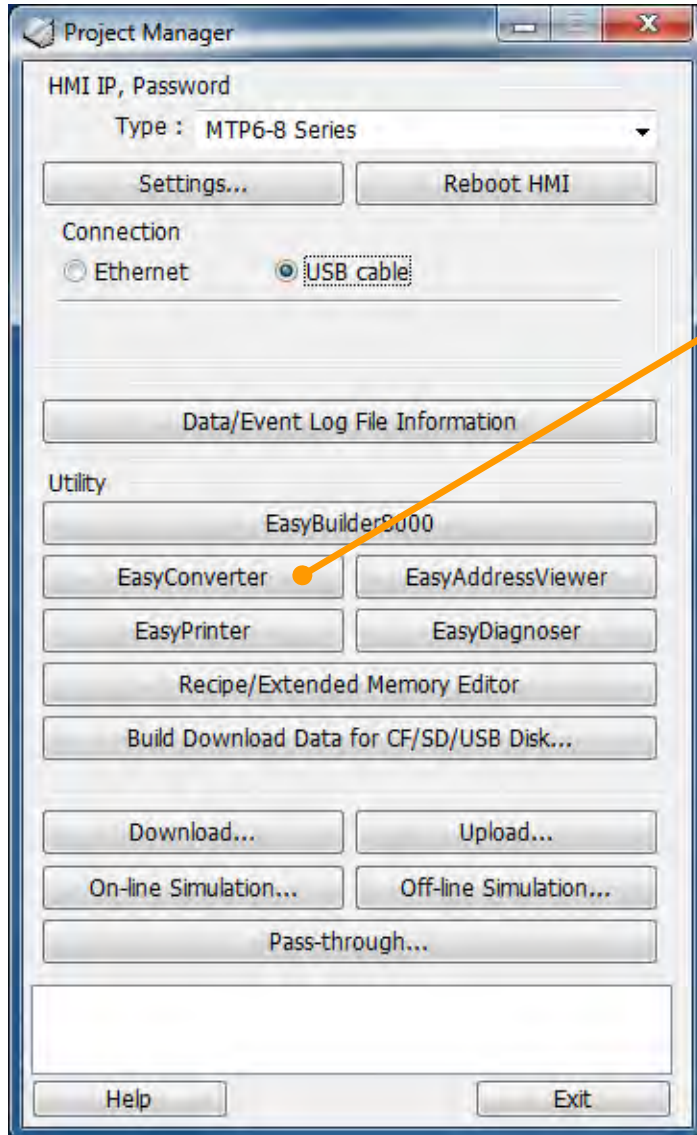
Select what to read or to write using a simple checklist

Allows to *Upload* or *Download* the project directly using the *USB* or *Ethernet* port with no need to open the EB graphic editor

- *Data/Event Log File Information* displays information about files stored in the HMI Flash memory



- *EasyConverter* is a tool to view the events or historical data stored in the HMI or to save this data as .csv files





- *EasyPrinter* can be used to send copies or historical files to a PC connected to the HMI via the Ethernet port

